

# Silent Gliss 5300

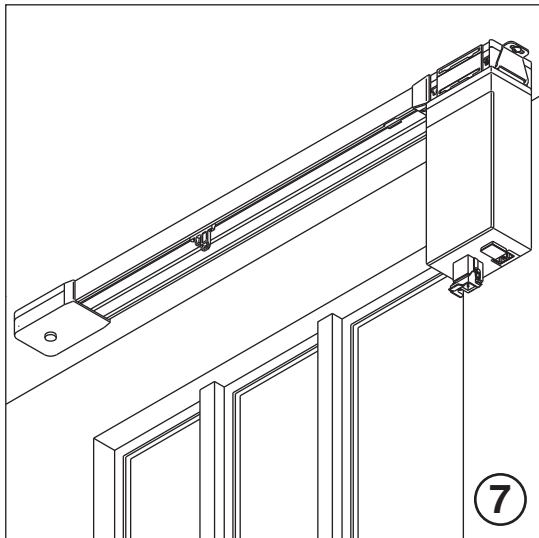
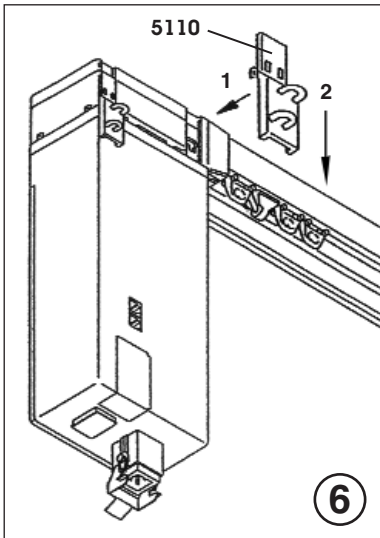
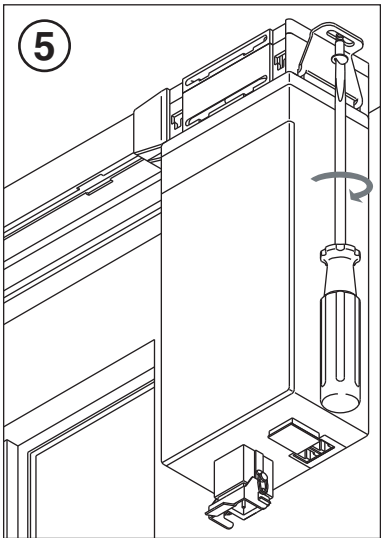
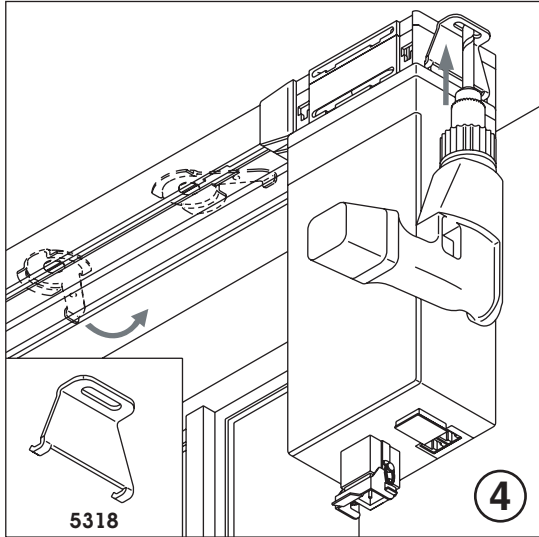
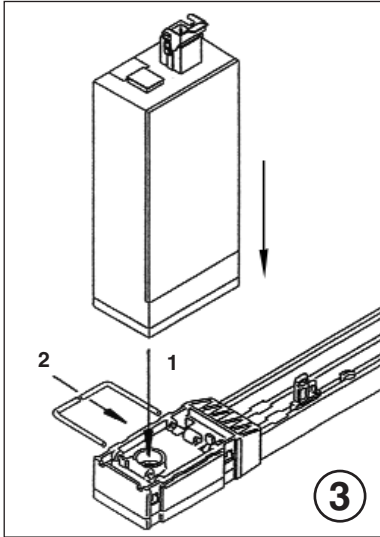
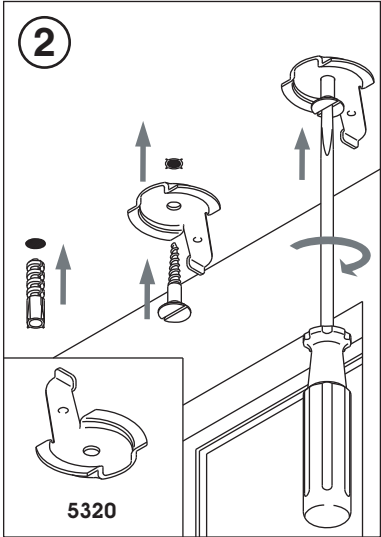
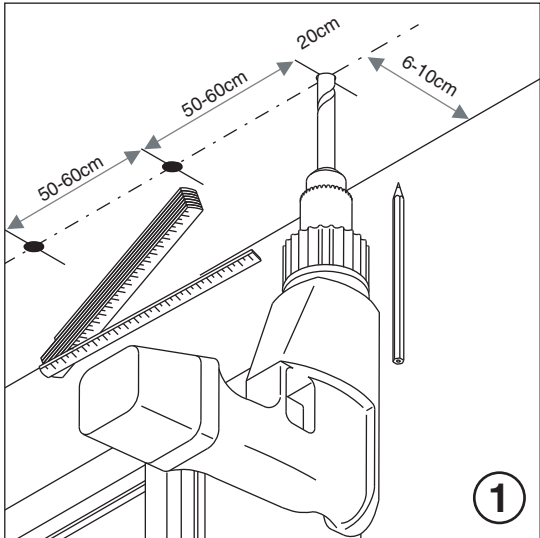
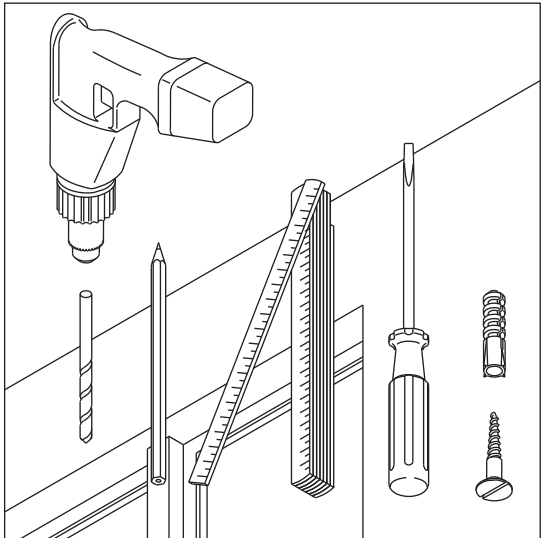
## Fitting Instructions

### Includes:

- Ceiling Fix
- Wall Fix
- Joining track with connecting bridge

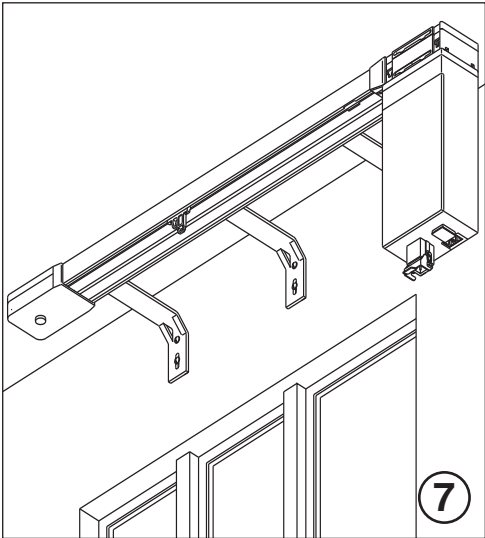
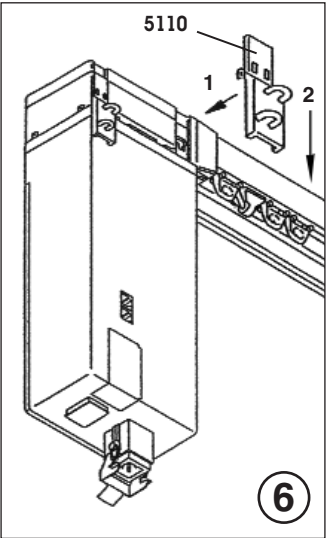
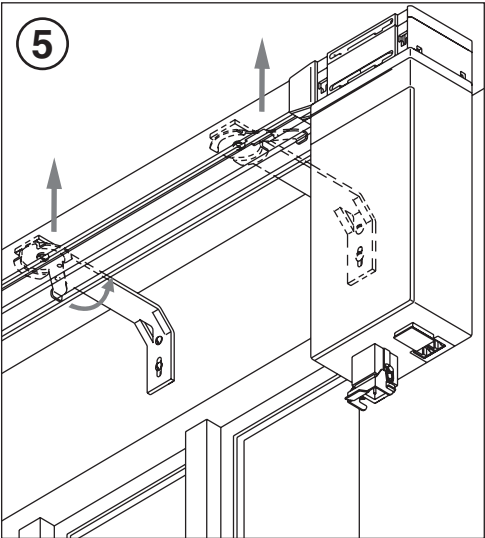
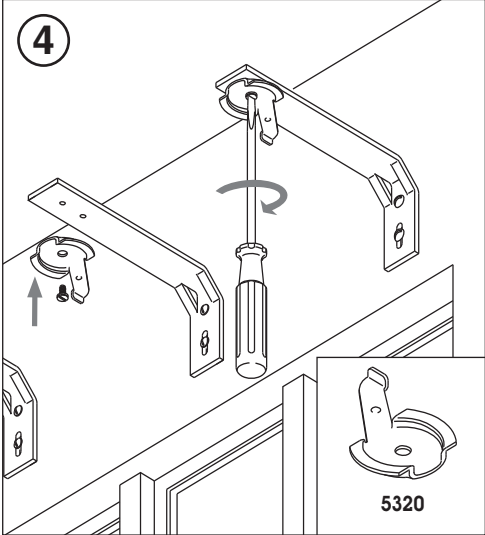
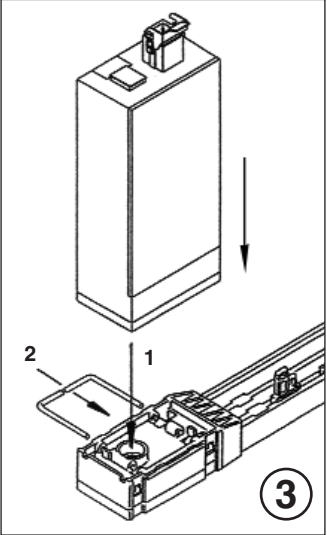
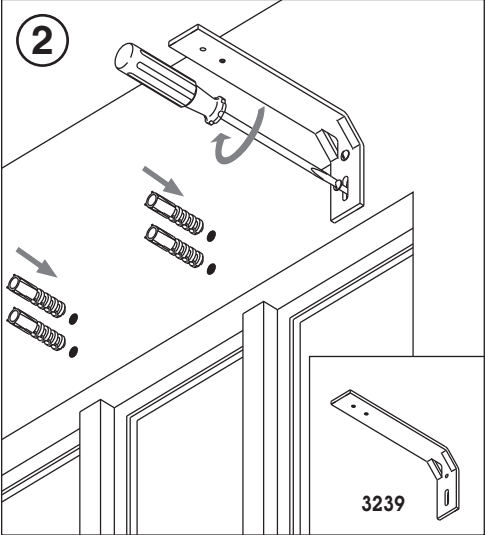
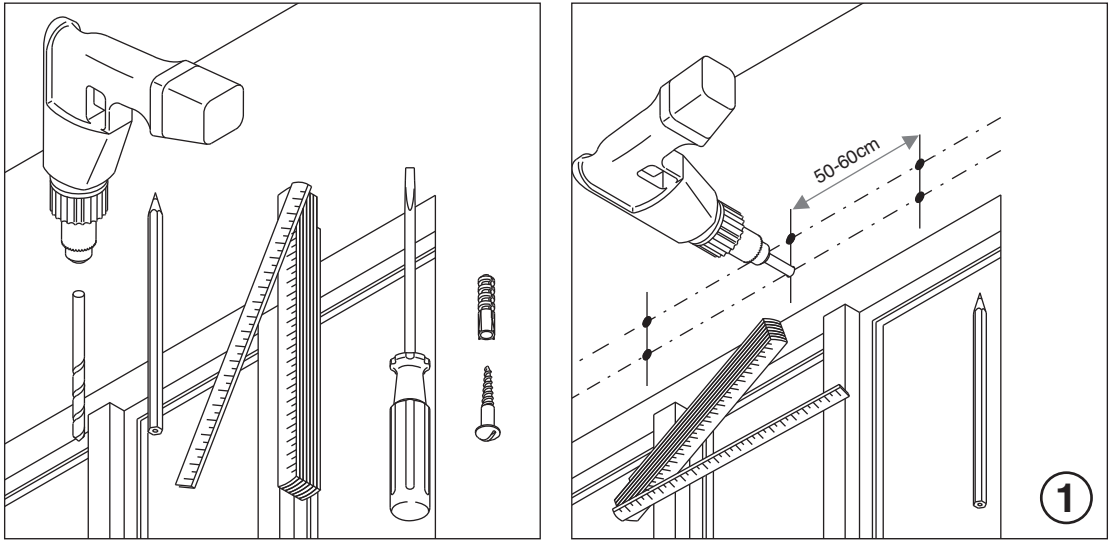
# Silent Gliss® 5300 Fitting Instructions

## Ceiling Fix



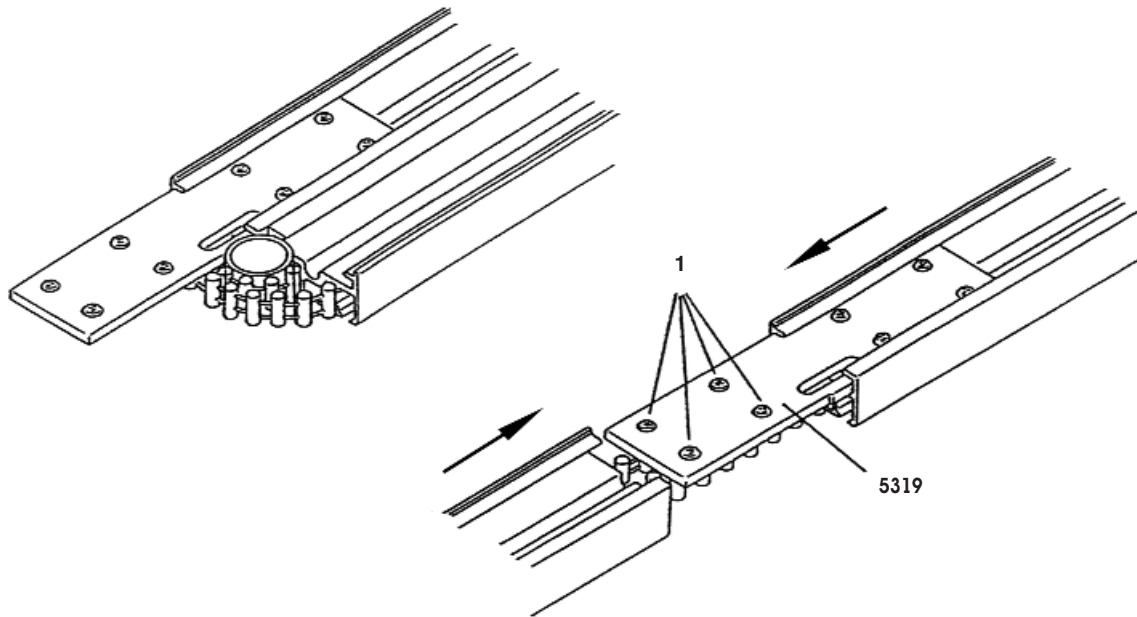
# Silent Gliss® 5300 Fitting Instructions

## Wall Fix

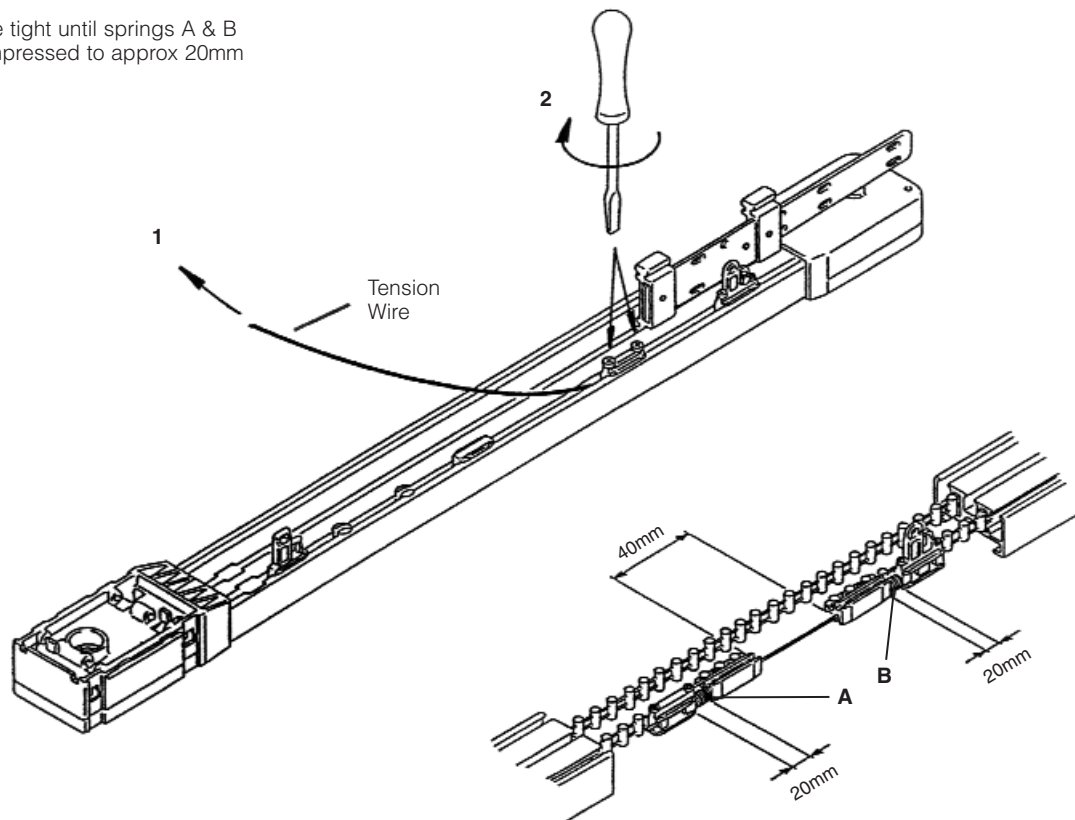


# Silent Gliss® 5300 Fitting Instructions

## Joining track with connecting bridge



1. Pull wire tight until springs A & B are compressed to approx 20mm



**NB** Once tested, tension wire can be cut, and raw end can be covered with heat shrink supplied. Warming the rubber with warm air will cause rubber to shrink and adhere to the wire.

0805

### Silent Gliss Limited

Pyramid Business Park, Poorhole Lane, Broadstairs, Kent CT10 2PT  
Telephone: 01843 863571 Fax: 01843 864503  
E-mail: info@silentgliss.co.uk www.silentgliss.co.uk

