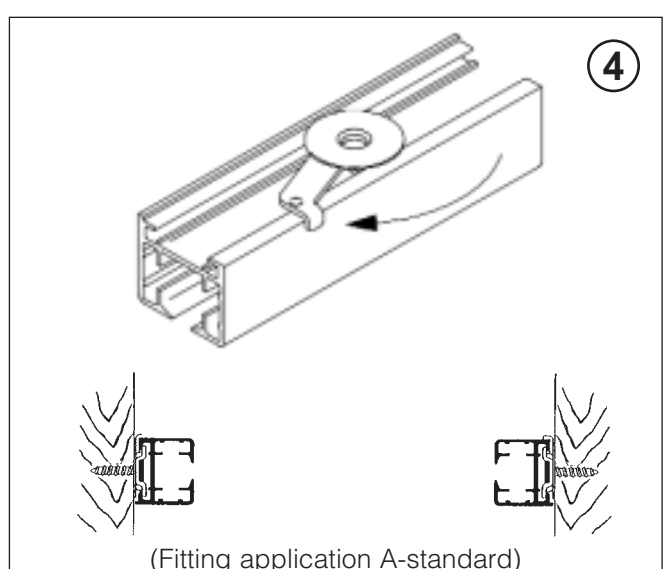
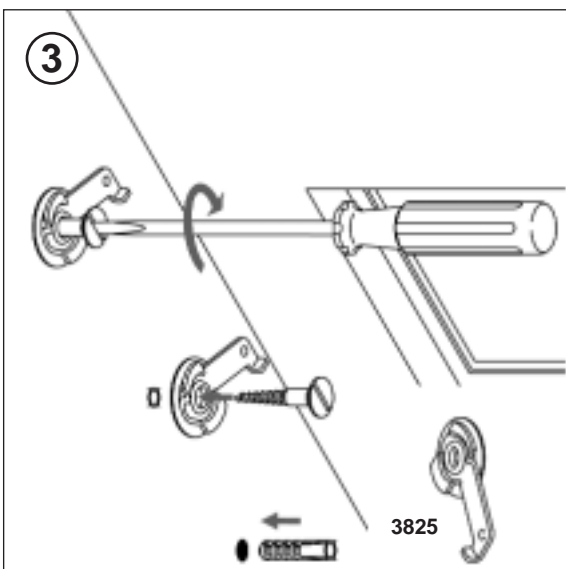
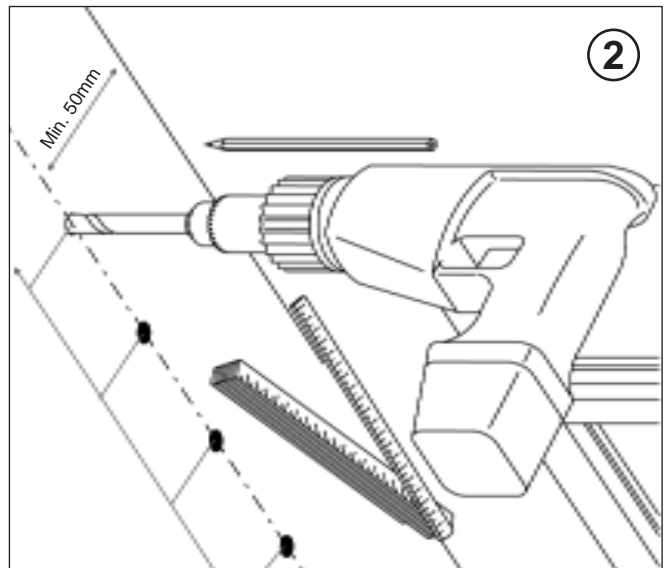
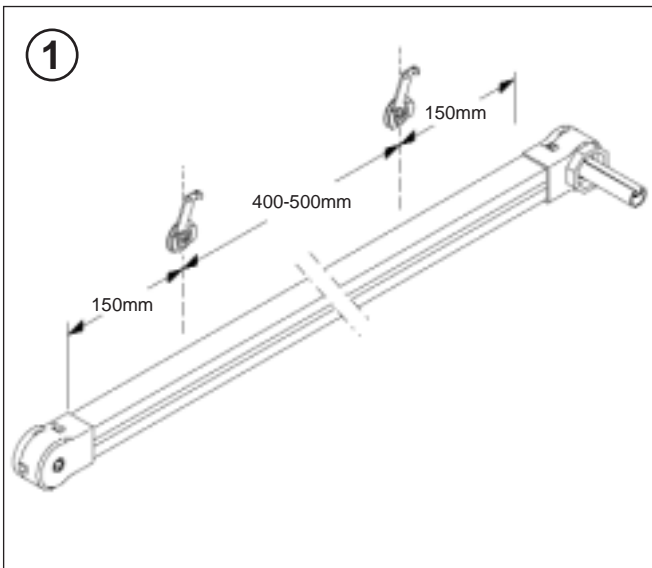
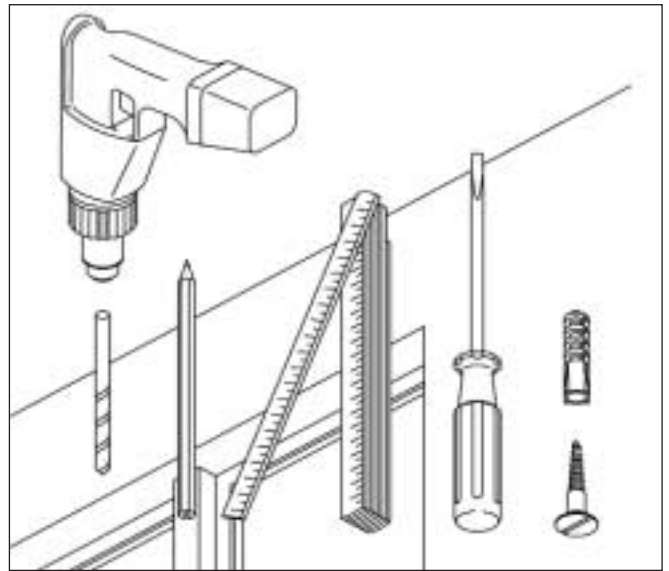
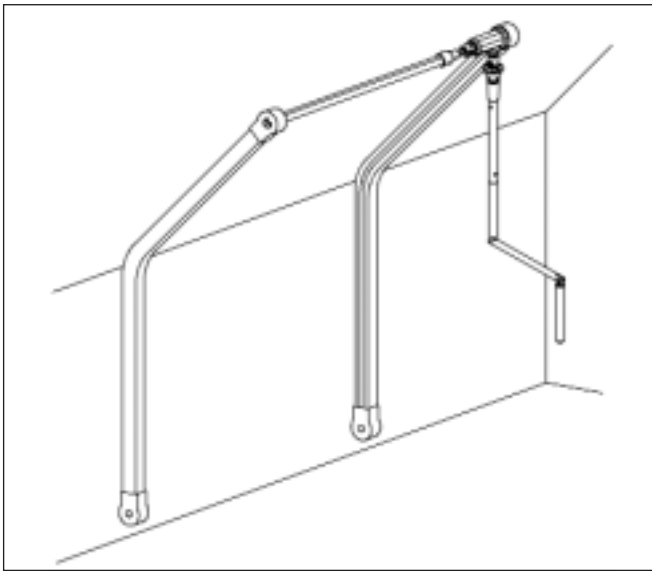


Silent Gliss® 2190 Fitting Instructions

Crank Operated Wintergarden System

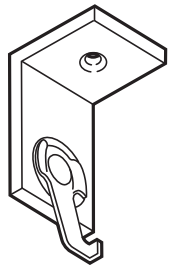


Silent Gliss® 2190 Fitting Instructions

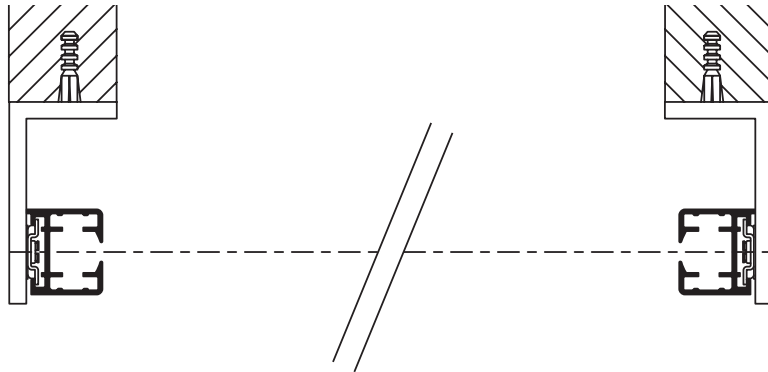
Crank Operated Wintergarden System

5 Optional and multi track bracket detail

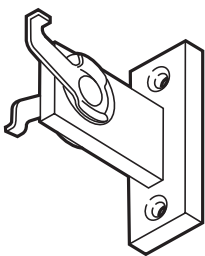
Fitting application B



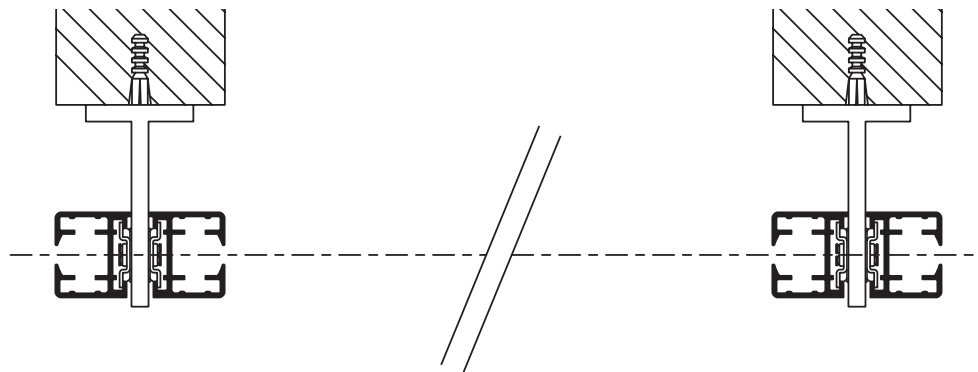
3065A



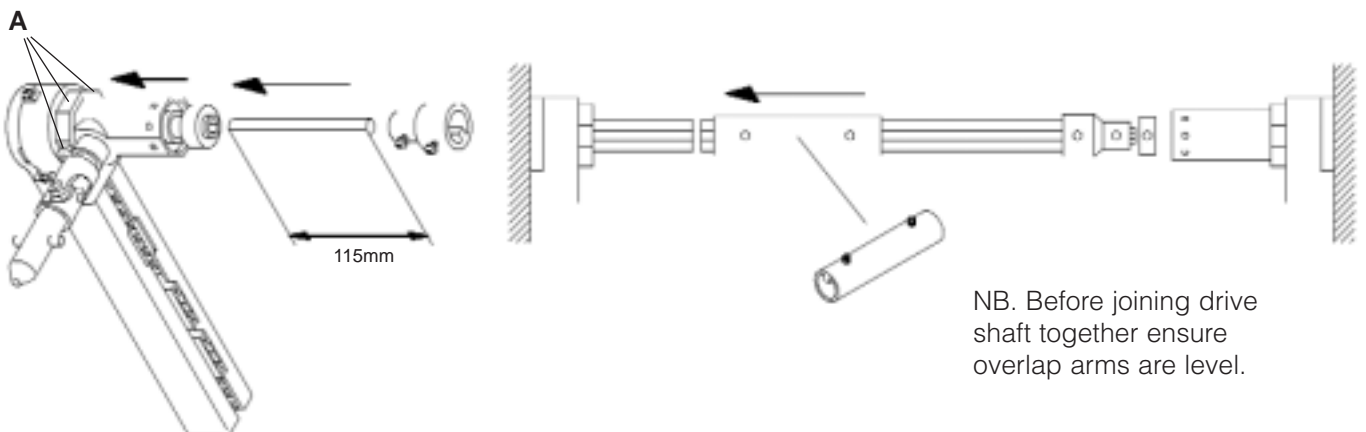
Fitting application C



3066B



6 Gear and drive shaft assembly



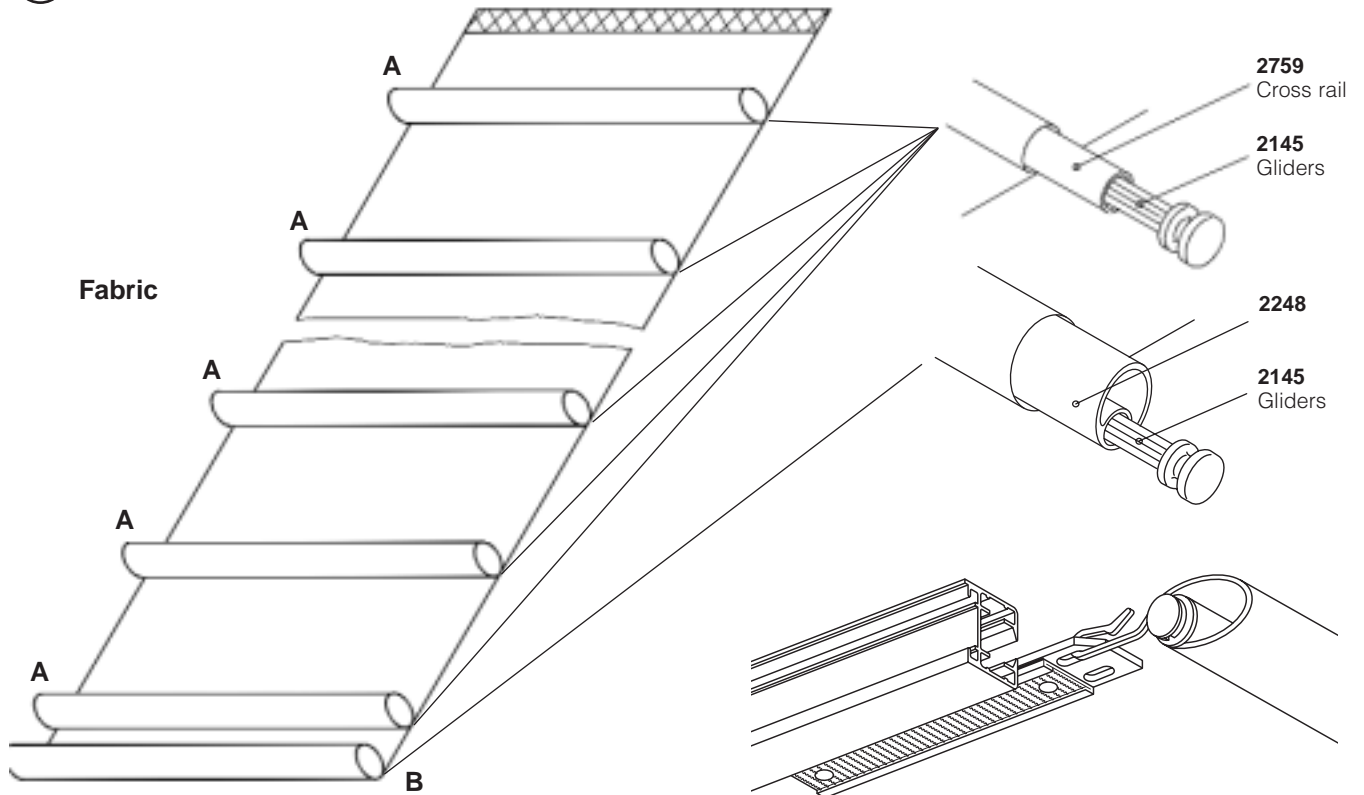
NB. Before joining drive shaft together ensure overlap arms are level.

A Secure crank assembly to endpiece at these 3 points, using screws supplied.

Silent Gliss® 2190 Fitting Instructions

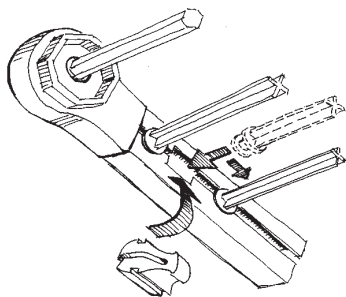
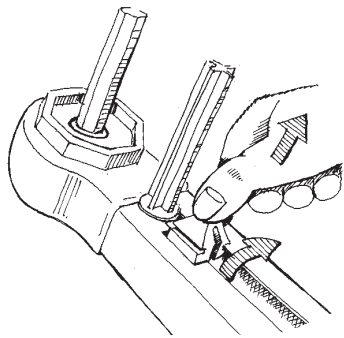
Crank Operated Wintergarden System

7 Fabric, glider and cross rail assembly



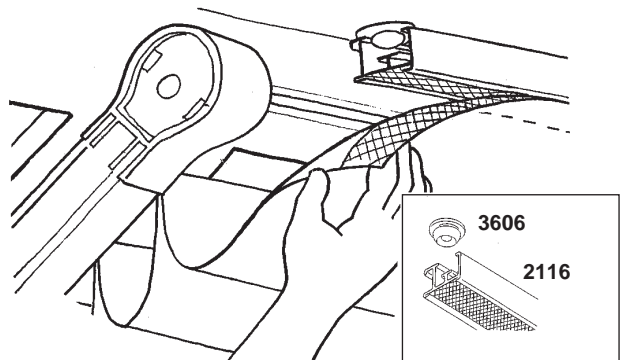
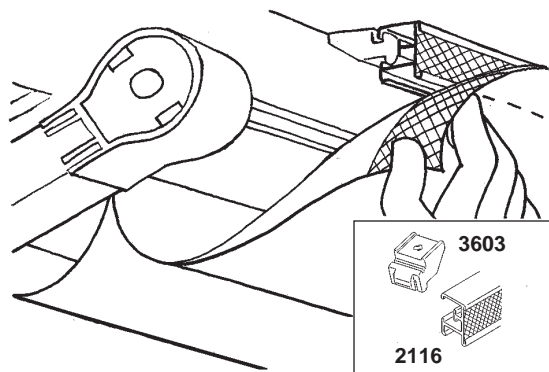
8

A Insert gliders into side profiles (with cross rods and fabric) as shown



B Apart from the last pocket which is fixed to the overlap arms as shown above.

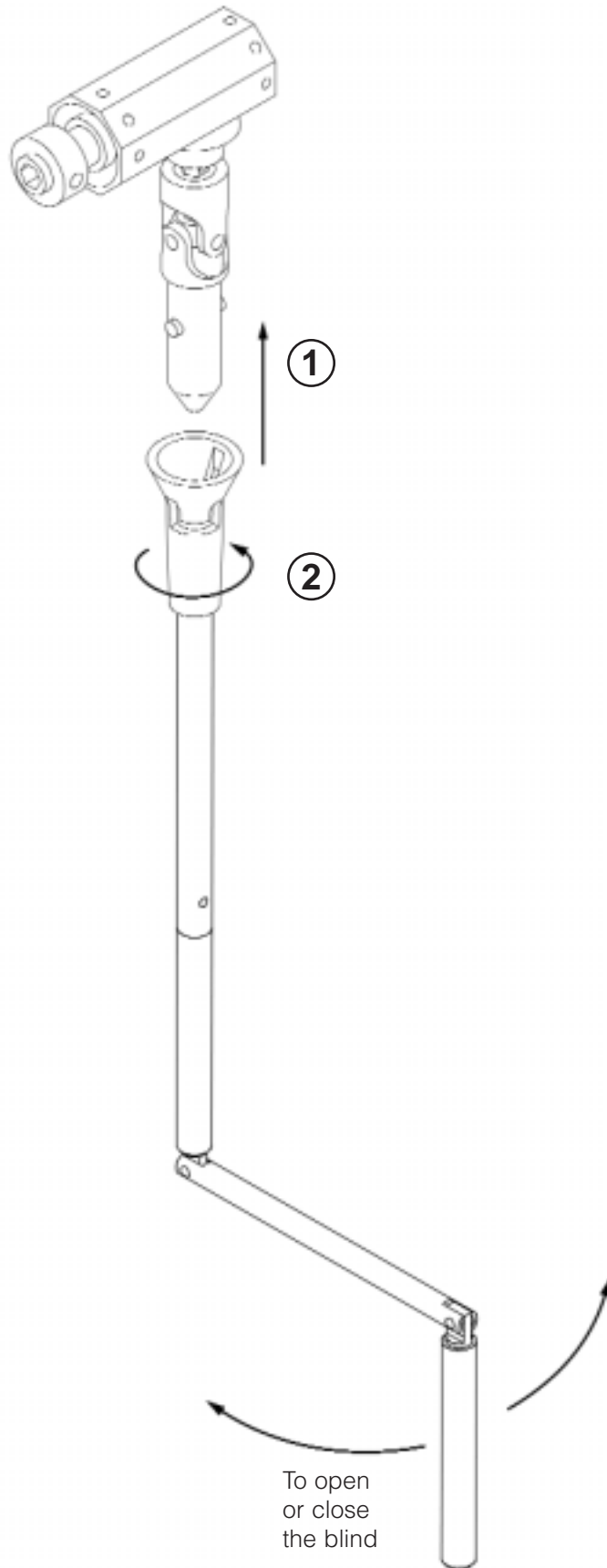
Install 2116 Velcro profile at top of system as shown to suit flap.



Silent Gliss® 2190 Fitting Instructions

Crank Operated Wintergarden System

9 Operating the blind



0805

Silent Gliss Limited

Star Lane, Margate, Kent CT9 4EF, England
Telephone: 01843 863571 Fax: 01843 864503
E-mail: info@silentgliss.co.uk
www.silentgliss.co.uk

