



# CURTAIN RAIL

SUPPLIES LTD



Trade Price List 2022

Excluding VAT

# Contents

## Products:

- Roman Blind Headrail & Accessories: Page 6-13
- TripleGlide Track: Page 14-15
- Metal Poles: Page 16-19  
(Moda, Strand)
- Wood Poles: Page 20-28  
(Rougemont, Navarra, Ashwood & Lunar Oak)
- Workroom Essentials: Page 29-41  
Curtain Tapes & Buckram  
Linings & Interlinings  
Cushions  
Curtain Hooks  
Weights,  
Eyelets  
Hook & Loop Fastener
- Tie Backs & Tie back Hooks: Page 42-44
- Packing Materials: Page 45
- Sampling: Page 46



All prices in this brochure are Trade Excluding VAT, unless stated otherwise.

Curtain Rail Supplies Ltd reserve the right to change designs, specifications and prices without prior notice.

Any Damages or Discrepancies on deliveries must be claimed for in writing within 3 working days.

We are unable to accept any returns without prior written consent from ourselves, a restocking fee may apply.

All made to measure goods are non-returnable.

All made to measure orders with either bends, cords or chains are required in writing.

# About Us:

With over 35 years of experience Curtain Rail Supplies Ltd is one of the UK's leading organizations supplying the soft furnishing trade with curtain hardware, accessories & workroom products. Specialising in Silent Gliss Made to Measure systems.

# Products:

In this price list you will find products of our own including some fantastic new ranges, alongside products from leading brands & manufacturers in the industry.

We offer the full range of Silent Gliss products,  
Which are made to measure to the highest possible quality in our workshop.



ROUGEMONT



# Delivery:

## *Locally:*

Weekly we deliver to Devon & parts of Somerset which is Free for orders over £25.  
Orders under £25 may be subject to a £5 delivery charge.

## *Nationally:*

Orders over £150 (Trade) are delivered Free of charge.



# Silent Gliss Curtain Tracks

We Supply the Full Silent Gliss Range, including hand operated tracks, cord operated, electrically operated tracks, Hospital Cubical tracks, Made up Wave Curtains and a large selection of high-quality blinds for the domestic and contract application.

The range of tracks are all made to measure and can all be bent into a bay.

**For most of Silent Gliss tracks we only charge for a maximum of 2 bends**

**(For example, on a 6-bend bay, you only pay for 2 bends)**



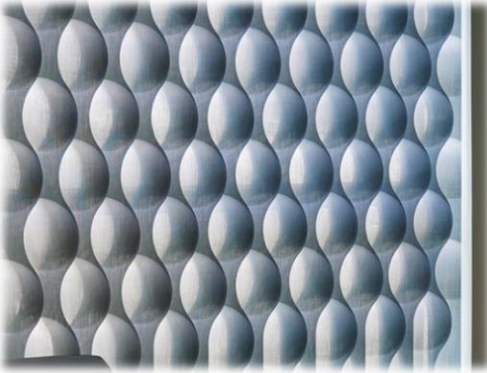
The full range can be found in the Silent Gliss Pricelist, or at

[www.silentgliss.co.uk](http://www.silentgliss.co.uk)

Please contact us for more information.

# Silent Gliss Blinds

Silent Gliss also offer Standard Verticals, Venetians (aluminium, wood, leather), Skylights systems, Heavy duty Rollers, all of which can be electrically operated & Battery Rollers



3D Vertical Wave



Wave Panel



Roller Blinds



Sliding Panels



Vertical Wave



The full range can be found in the Silent Gliss Pricelist, or at [www.silentgliss.co.uk](http://www.silentgliss.co.uk)

Please contact us for more information.

# Roman Blind Headrail

## Made to Measure Headrail:

- Strong 1.2-gauge profile.
- Cords adjustable in 1 click with no screws.
- Transit locking pin.
- Child safety components included.
- 5 Year warranty.
- Breakaway gear drives at no extra cost.



## Choice of 3 different gear drives:

### 1:1 with Integrated Breakaway

3.5KG Weight limit. This is a quick operation gear drive.

If breakaway cog is released it can be placed back into the gear housing very easily.

Chain must be at least 60cm from floor.

### IMPROVED 1:4 with Integrated Breakaway

10KG Weight limit. This is a slower but smoother gear drive.


If breakaway cog is released it can be placed back into the gear housing very easily.

Chain must be at least 60cm from floor.

### 1:4 NON-Breakaway

7.5KG Weight limit. Non-Breakaway chain cog,

Chain must be at least 150cm from floor, secured with chain retainer (provided)

 <b>Curtain Rail Supplies</b> <small>Trade Supplier</small>		<small>100 Tropic Square          Weymouth Dorset          DT8 4LH          01929 420000          info@curtainrailsupplies.com          www.curtainrailsupplies.co.uk</small>		<b>Date</b> <b>Account Name</b> <b>Order Reference</b> <b>Delivery Address</b> <small>(if different to account address)</small>		
CRS Easylock Roman Blind Order Form						
Track Reference	Track Size	Installation Height	Chain or Blind Drop (Please Specify which)	Gearing (1:1 Breakaway) or (1:4 Breakaway) or (1:4 NON Breakaway)	RH or LH Operation	Colour of Chain

Order form available on request, or you can download form our website [www.curtainrailsupplies.com](http://www.curtainrailsupplies.com)

# Roman Blind Headrail

## Made to Measure Prices:

### Size Up to:

60cm  
80cm  
100cm  
120cm  
150cm  
175cm  
200cm  
225cm  
250cm  
275cm  
300cm  
325cm  
350cm



*Minimum blind size is 37cm*

*Headrail comes complete with shaped plastic bottom bar and universal brackets. Extra cord spools available at no extra cost, if requested at time of ordering*

**Choice of chain colours at no extra cost:** *Chrome (non-rust) as standard.*



Antique Brass

Chrome (chrome plated brass that will not rust)

Copper

Brass

Grey Nickel

*White Plastic is also available*

# Roman Blind Child Safety

Our Roman Blind Systems are tested to British Standards BS EN 13120:2009 +A1:2014.

## **Operating Chains & Cords with NO Breakaway:**

The important point of calculation is the installation height of the blind or track, this determines how long the chain or cord can be. The bottom loop of the chain or cord must be at least 150cms from the floor and secured with a safety device, without the safety device the product is not compliant and should not be fitted. Example – Headrail installation height 200cm, chain/cord length will be 50cms maximum.

OR

## **Operating Chains with Breakaway:**

If the operating chain/cord has a breakaway device then the bottom loop of the cord/chain can be 60cms from the floor and a chain retainer is not required.

**This applies to our 1:1 and 1:4 Integrated Breakaway Roman Blinds.**



# Roman Blind Child Safety

## **Accessible Inner Cords (*Roman Blind Pull Cords at the rear*)**

The maximum distance between two consecutive attachment/retention points (*normally rods, pockets or blind rings*) shall be less than or equal to 20cms. Any of the traditional methods of fixing the cord to the bottom rod pocket can be used if the rods are no more than 20cms apart in all areas of the Roman blind.

For Roman Blinds with rod pockets greater than 20cms at any point a Curtain Rail Supplies Ltd breakaway device must be used on each cord. The device that we supply with our Roman Blinds is the Safety Cord Toggle. The cord should be left unknotted to ensure that the cord can pass through. This must be secured to the blind to ensure that this doesn't fall to the floor and become a choking hazard in the event of a breakaway happening (*stitched or using cable tie*).

**These toggles are supplied with every Curtain Rail Supplies Ltd Roman Blind at no extra cost.**



**Safety Cord Toggle** (including cable tie)  
Additional packs of 100

## **Using Additional Cord Breakaway Devices**

To prevent cords being pulled up into the headrail, additional devices are available. On a minimum of the bottom two rod pockets, Cord Breakaway Devices can be used. This enables you to tie a knot to the cord underneath the Safety Cord Toggle, the knot also ensures the Toggle cannot fall to the floor.



**Cord Breakaway Device  
For Pockets or Eyelets**

A two-part Safety device for use and tested with Curtain Rail Supplies Roman Blinds. Releases under 6KG.  
(Packet of 100)



**Cord Breakaway Device  
For Roman Blind Tape**

A two-part Safety device for use and tested with Curtain Rail Supplies Roman Blinds. Releases under 6KG.  
(Packet of 100)



# CRS Battery Operated Roman

## MOTORISATION MADE AFFORDABLE

- Fully Tested 6KG Load Weight.
- Battery Life tested on 500 lift / lower operations.
- Supplied with a Lithium Battery.
- Easy step by step pairing and limit setting.
- Minimum blind size is 47cm.
- Sleek modern handset with magnetic wall bracket.
- 5 Year Warranty.

## Made to Measure Prices:

Size Up to:                      Trade Price

60cm

80cm

100cm

120cm

150cm

175cm

200cm

225cm



Prices includes Lithium battery: Battery must have an initial 16 hours charge.

## Accessories:

Single Channel Remote

15 Channel Remote

Charger for Battery



# Roman Blind Accessories



**Clear Clip on ring for 4mm Fibreglass Rod**

(Pack of 100)



**Clear Blind Ring**

7mm inside / 13mm outside diameter

(Pack of 1000)



**Brass Ring**

9mm inside / 13mm Outside Diameter

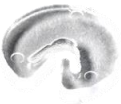
(Pack of 200)



**Blind Cord**

Heavy Duty 1.3mm thickness

(500m Roll)



**Chain Stop** (Supplied as standard on 1:1 gear drive)

(Pack of 100)



**5mm Nickel Eyelets**

(Pack of 1000)

# Roman Accessories

## Fibreglass Rods

### 4mm Diameter

75cm Length (pack of 25 price)

(Pack of 100)

100cm Length (pack of 25 price)

(Pack of 100)

150cm Length (pack of 25 price)

(Pack of 100)

200cm Length (pack of 25 price)

(Pack of 100)

400cm Length (Pack of 10 Price)

400cm Length (Pack of 100 Price)

### 8mm Diameter

500cm Length (Pack of 5 Price)

500cm Length (Pack of 100 Price)

## Fibreglass Rod Endcaps

4mm only (Pack of 250)

## Wood Rod 240cm

### 6mm Diameter

(Pack of 10)

(Pack of 100)

### 9mm Diameter

(Pack of 10)

(Pack of 100)

## Bottom Bar

Hardened PVC Oval bottom bar

400cm length, 25mm width, 9mm depth

*(Included in our made to measure Roman Blinds)*

(Pack of 5)

(Pack of 50)



# Roman Blind Chain

Replacement Roman Blind Chain (Number 10) made to your required drop size.

Priced by the metre drop,

for example, if you have a 1.75m drop multiply that by the metre price below.

So, for Antique Brass chain you would **multiply 1.75 x**

Chain Colour	Price Per Metre Chain Drop
Antique Brass	
Brass	
Copper	
Grey Nickel	
Chrome-Plated Brass (Non-Rust)	

## Roman Blind Headrail

Available in component form for self-assembly:

**Headrail (580cm):** (Outer of 5 lengths)

**Drive Rod (500cm):** (Outer of 5 Lengths)

**1:4 Integrated breakaway Gear Drive:** (each)

**1:1 Integrated breakaway Gear Drive:** (each)

**Chrome Plated Brass Chain: (125m Roll):**

**Safety Cord Toggle (including cable tie):** (Pack of 100)

**Easylock Cord Spool with 300cm of cord:**

(each)

(Outer of 50)

**Universal Brackets:**

(each)

(Outer of 50)

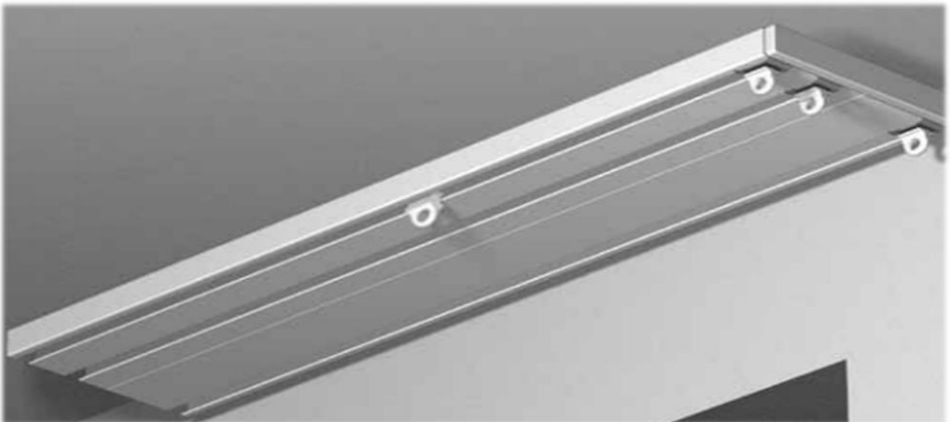
# TripleGlide

## Multi-Channel Contract track



Our aluminium TripleGlide track has a channel for voiles close to the window, and two channels at the front of the track for the main curtains. This offers a large overlap to prevent light pollution which makes TripleGlide a perfect product for Hotel bedrooms.

No brackets are required with TripleGlide. To fit, a series of holes need to be drilled into the central groove. This gives a strong and quick fixing.



# TripleGlide

TripleGlide is supplied made to measure with endcaps, twist end stops, 14 Strong gliders per metre for the voile, and 14 strong gliders per metre for the main curtains (distributed between the channels). The strong aluminium profile is powder coated white to offer a smooth glide.

## Made to Measure Prices:

Sizes up too:

150cm

200cm

250cm

300cm

350cm

400cm

450cm

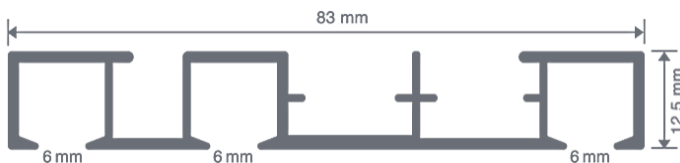
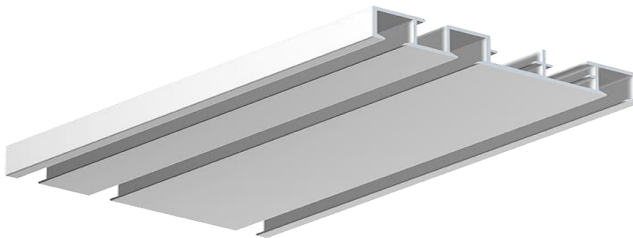
500cm

550cm

Additional Heavyweight Gliders (Pack of 100):

Additional Twist End Stops (Pair)

Additional End Caps (Pair)





# MODA Range

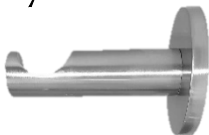
28mm Stainless Steel Effect

**Poles**



All poles are in one piece

**Cylinder Bracket**



Projection to centre of the pole 75mm  
Baseplate diameter 63mm

**Ceiling Bracket**



Projection to centre of the pole 58mm  
Baseplate diameter 42mm

**Recess Bracket**



Baseplate diameter 41mm

**Cylinder Bracket Large**



Projection to centre of the pole  
110mm

**Joining Bridge**



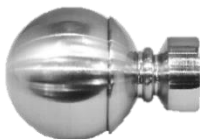
Used to connect two poles

**Nylon Lined Rings**



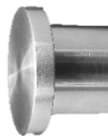
Inside ring diameter 41mm

**Ball Finial**



Length 82mm

**Dot Finial**



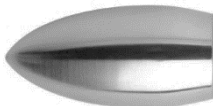
Diameter 39mm  
Thickness 6mm

**Clear Ball Finial**



Length 92mm

**Bullet Finial**



Length 88mm

**Holdback**



Length 92mm  
Projection 90mm

# MODA Range

28mm Antique Brass Effect

## Poles



All poles are in on piece

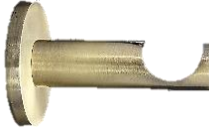
120cm

150cm

180cm

240cm

## Cylinder Bracket



Baseplate diameter 63mm

## Ceiling Bracket



Projection to centre of the pole 59mm

Baseplate diameter 43mm

## Recess Bracket



Baseplate diameter 41mm

£

## Extension Bracket



Baseplate diameter 50mm

Extends the pole to 220mm

## Joining Bridge



Used to connect two poles together with a bracket

## Nylon Lined Rings



Inside ring diameter 41mm

## Ball Finial



Length 86mm

## Stud Finial



Diameter 35mm

Length 34mm

## Clear Ball Finial



Length 92mm

## Bullet Finial



Length 88mm

## Holdback



Length 92mm

Projection 90mm

# MODA Range

Stainless Steel Effect & Antique Brass Effect Complete Packs

## Stainless Steel Effect

*(Including either Ball, Dot or Bullet Finials)* For Clear Balls Finials add per pole

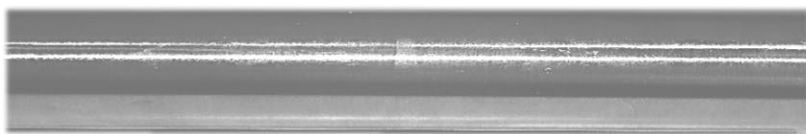
150cm Supplied in one length with 2 cylinder brackets and 16 rings

200cm Supplied in one length with 2 cylinder brackets and 20 rings

250cm Supplied in one length with 3 cylinder brackets and 26 rings

300cm Supplied in two lengths with 3 cylinder brackets and 30 rings

400cm Supplied in two lengths with 3 cylinder brackets and 40 rings



## Antique Brass

*(Including either Ball, Stud or Bullet Finials)* For Clear Balls Finials add per pole

120cm Supplied in one length with 2 cylinder brackets and 12 rings

150cm Supplied in one length with 2 cylinder brackets and 16 rings

180cm Supplied in one length with 2 cylinder brackets and 18 rings

240cm Supplied in one length with 3 cylinder brackets and 24 rings

300cm Supplied in two lengths with 3 cylinder brackets and 30 rings

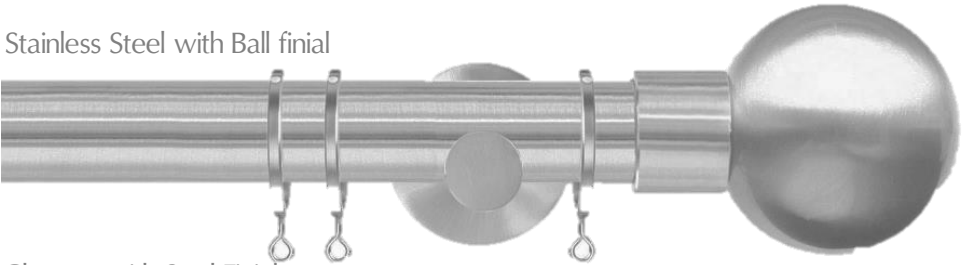
360cm Supplied in two lengths with 3 cylinder brackets and 36 rings



# Strand 35mm

Available in a choice of 3 colours Stainless Effect, Chrome and Rose Gold  
with a choice of 3 Finials, Ball, Stud and Cone

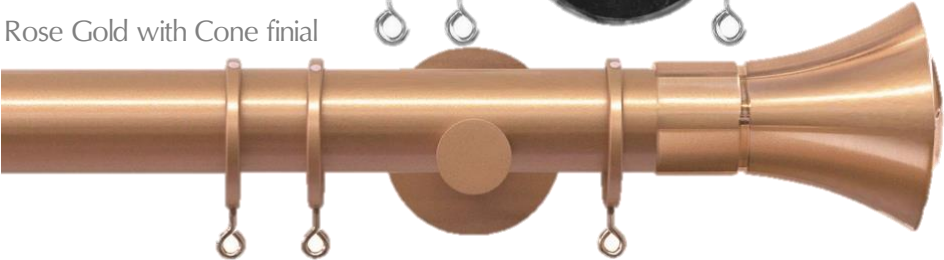
Stainless Steel with Ball finial



Chrome with Stud Finial



Rose Gold with Cone finial



## Sold as Complete pack

180cm Supplied in one length with 2 brackets and 18 rings

240cm Supplied in one length with 3 brackets and 24 rings

300cm Supplied in one length with 3 brackets and 30 rings

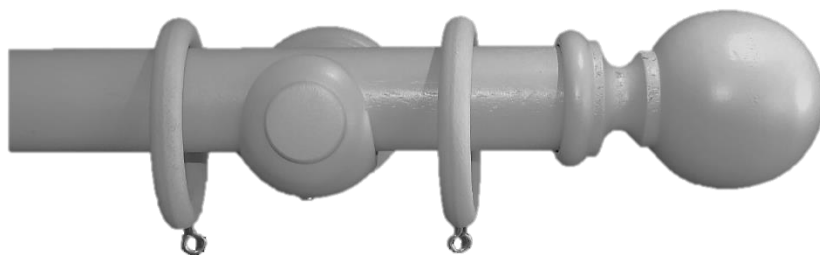
360cm Supplied in two lengths with 3 brackets and 36 rings

480cm Supplied in two lengths with 3 brackets and 48 rings

Additional Rings (Pack of 6)

# Navarra 35mm

Our Navarra poles are made using sustainable PEFC forests from the Navarran region of Spain.



Grey (NEW)



Stone (NEW)



White



Natural

# Navarra 35mm

## Navarra 35mm is sold as a Complete Pack:

150cm Supplied in one length with 2 Ball Finials, 2 brackets and 16 rings

200cm Supplied in one length with 2 Ball Finials, 2 brackets and 20 rings

300cm Supplied in two lengths with 2 Ball Finials, 3 brackets and 30 rings

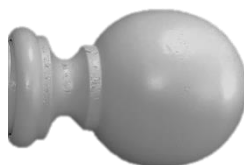
400cm Supplied in two lengths with 2 Ball Finials, 3 brackets and 40 rings



Bracket



Recess Bracket



Ball Finial



Ring

## Also available in component form:

150cm (Pole Only)

200cm (Pole Only)

Bracket (each)

Recess Bracket (each)

Ball Finial (each)

Rings (each)



# ROUGEMONT



# ROUGEMONT

A SELECTION OF HANDCRAFTED 45MM WOOD POLES  
AVAILABLE IN FOUR COLOURWAYS  
WITH A SELECTION OF FOUR UNIQUE FINIALS,  
THE COLOURS HAVE BEEN DESIGNED TO COMPLEMENT  
MANY OF TODAY'S FABRICS AND INTERIOR STYLES.

FINELY FINISHED IN THE UK  
BY EXPERIENCED CRAFTSMEN.

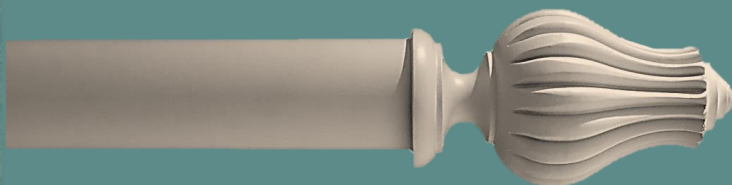


# ROUGEMONT

## COLOURWAYS & FINIALS



Clay



Lotus Finial



Mineral



Ribbed Ball Finial



Marble



Ball Finial



Porcelain



Button Finial



# ROUGEMONT

**Sold as Complete pack**

**180cm** Supplied in one length with 2 brackets and 18 rings

**240cm** Supplied in one length with 3 brackets and 24 rings

**300cm** Supplied in two lengths with 3 brackets and 30 rings

**360cm** Supplied in two lengths with 3 brackets and 36 rings

Additional Rings (Pack of 4)



# Ashwood 50mm

50mm Handcrafted solid Ash range.

Stained by hand to encourage the striking, visible grain.



Dove



Tusk



Light Oak



Medium  
Oak

# Ashwood 50mm

50mm Handcrafted solid Ash range.  
Stained by hand to encourage the striking, visible grain.



Cone Finial also available  
(Displayed in Light Oak)



Wooden Bracket  
(Displayed in Dove)

## **Sold as Complete pack**

180cm Supplied in one length with 2 brackets and 18 rings

240cm Supplied in one length with 3 brackets and 24 rings

300cm Supplied in one length with 3 brackets and 30 rings

360cm Supplied in two lengths with 3 brackets and 36 rings

480cm Supplied in two lengths with 3 brackets and 48 rings

**Additional Rings** (Pack of 6) Price

Unfinished Pole packs also available

Lead time on Ashwood 50mm poles is around 3 weeks.



# Lunar Oak 28mm

A mix of metal and real Oak components, combined for a modern, stylish finish



## Lunar Oak 28mm is Sold as a Complete Pack:

180cm Supplied in one length with 2 brackets and 18 rings

Ball

Cage

Barrell

210cm Supplied in one length with 3 brackets and 24 rings

Ball

Cage

Barrell

360cm Supplied in Two lengths with 3 brackets and 36 rings

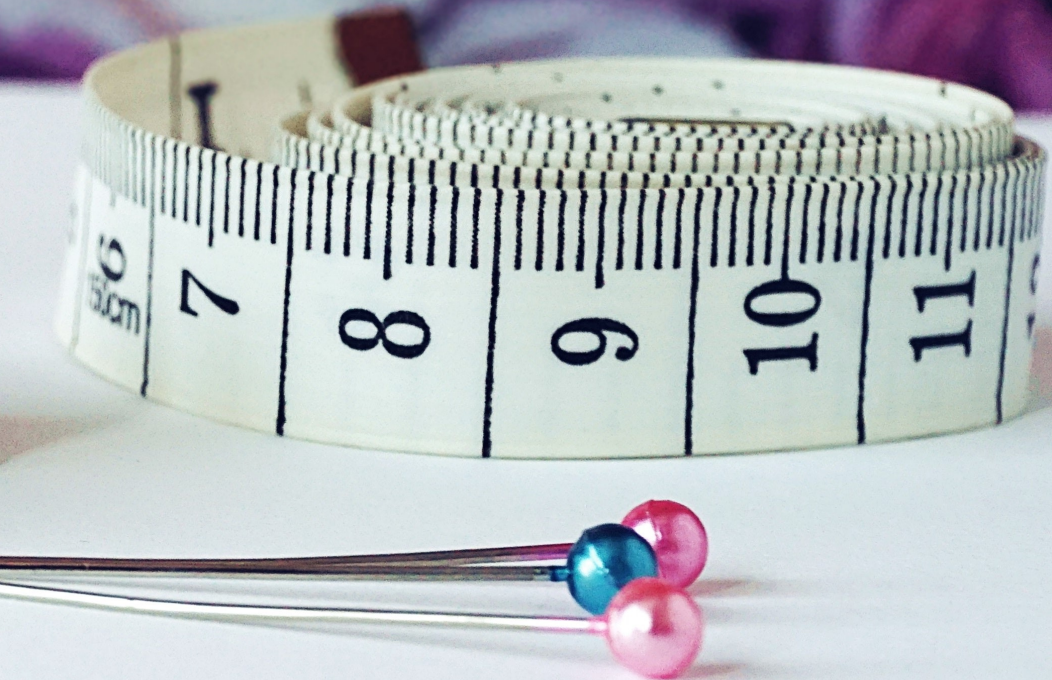
Ball

Cage

Barrell

Additional Rings (Pack of 6)

# Workroom Essentials



# Curtain Tapes



**1" Standard & 1" Fire Retardant:** Ecru,  
Woven pocket, Lightweight 28mm wide,  
100m Roll



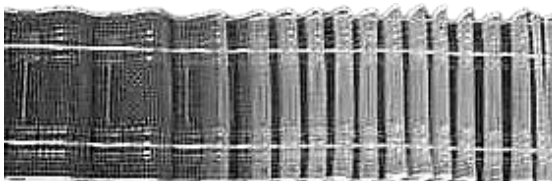
**Premier Pencil Pleat:**  
Premium pencil pleat with 3 rows of strong  
woven pockets, 76mm wide, 50m Carton  
Standard Price  
Fire Retardant Price



**Deluxe Premier Pencil Pleat:**  
High quality pencil pleat with 3 rows of  
strong woven pockets. Precise 2.5 fullness.  
76mm wide, 50m Carton



**Deluxe Multi Pocket Pencil Pleat:**  
Woven Multi-pocket with 5 rows of  
strong pockets  
76mm wide, 50m Roll



**Net Pleat:**  
Narrow Translucent with 2 draw cords,  
50mm wide, 50m Roll

# Tapes



## **Roman Blind Tape**

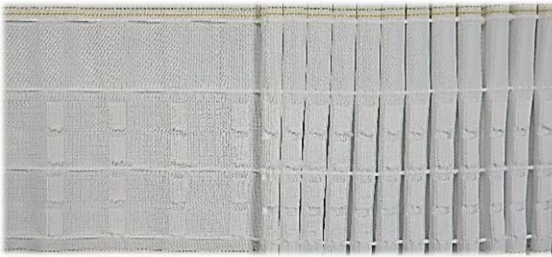
Ivory Slotted Roman Blind tape  
20mm wide, 100m Roll



## **Silent Gliss Wave Tape**

For use with Silent Gliss Wave  
Gliders, 50m Carton or by the Metre  
Price 50m roll:  
Price per Metre (cut length)

# Deep Curtain Tapes



## **Deep Pencil Pleat:**

Premium Deep Pencil Pleat with 4  
rows of strong woven pockets.  
Precise 2.5 fullness 150mm wide,  
50m Roll



## **Deep Pinch Pleat:**

Premium Deep Pinch Pleat with 4  
rows of Strong woven pockets.  
Precise 2.0 fullness, 150mm wide,  
50m Roll



# Buckrams & Essex Board

We stock and supply a large range of Buckrams, from double sided iron-on, Single sided & Sew on, in a range of sizes.

## Heat Activated Double Sided Buckram: 50m roll:

4" (102mm)

5" (127mm)

6" (152mm)

## Heat Activated Single Sided Buckram: 100m roll:

4" (102mm)

5" (127mm)

6" (152mm)



## Sanforised Sew in Buckram: 100m roll:

4" (102mm)

5" (127mm)

6" (152mm)

Stabilised and suitable for both dry cleaning and washing.

## Essex Board:

Essex Board is a highly compacted board made from many strips of paper layered to produce a lightweight alternative to MDF with a smooth surface unlike plywood

- Lighter than ply or hardboard and easier to handle it provides less weight to hang from the pelmet board.
- Can be scored with a sharp blade, allowing for bending for hinged returns/shaping around bay windows. Can be used in circular bays where it will not split in the bend.
- Essex Board can also be stapled into using the appropriate 4mm length staple
- Essex Board will not bow in humid conditions.
- Supplied in 218.5cm lengths.

(12") 4mm x 305mm (Pack of 5)

(16") 4mm x 406mm (Pack of 5)

(24") 4mm x 609mm (Pack of 5)

# Linings



## **Cotton Sateen Lining (White, Ivory, Cream, Linen):**

137cm Wide, Creased & Lapped, UK Produced.

*90m Roll approx.*

## **DB1 Luxury Sateen Lining (White, Ivory, Cream, Linen):** OUR MOST POPULAR LINING

DB1 is our most popular lining, the composition, construction and finish has been designed to make a fuller more elegantly flowing drape by enhancing the sheen, reducing the creasing and increasing the width. 200gsm in weight. 142cm Wide, creased & lapped, UK Produced.

*50m Roll Approx.*

## **DB1Gold(Ivory,Cream):**

The finish, handle and performance of DB1 Gold cannot be surpassed, it has all the benefits of standard DB1 plus a new soil resistant finish, increased weight to 205gsm and a fuller finish. 142cm wide creased and lapped & UK produced.

*50m Roll Approx.*

## **Thermal Lining (Ivory):**

Offering energy saving Thermal properties and protection for face fabrics 137cm Wide. *50m Roll Approx*

## **DB4 Silky 3 Pass Blackout Lining (Cream, White):**

Silky Soft Finish, Crease Resistant. 137cm Wide.

*50m Roll Approx.*

# Linings & Interlining



## **DB4 Silky 3 Pass Blackout Lining Flame Retardant Lining (Cream):**

Silky Soft Finish, Certified to the IMO Fire Test Procedure 2010 Part 7. 137cm Wide.

*50m Roll Approx.*

## **Durable Cotton Sateen Lining Flame Retardant (Cream):**

Durable (Wash & Dry Clean) Conforms to BS 5867-2:2008 Type B. 137cm Wide.

*90m Roll Approx.*

## **Synthetic Sarrile Interlining (White):**

137cm Wide, 220gsm weight.

*50m Roll Approx*

## **Cotton Domett Interlining (Natural):**

100% Cotton 137cm Wide, 250gsm weight.

*50m Roll Approx*

## **Cotton Bump Interlining (Natural):**

Cotton Rich, 137cm Wide, 390gsm.

*40m Roll Approx.*

## **Bonded Lining:**

Ivory Sateen lining bonded to Sarrile Interlining 100% Cotton, 137cm Wide.

*35m Roll Approx.*

## **Blackout Bonded Lining (Cream/Ivory):**

Supersoft Blackout lining bonded to Sarrile Interling. 137cm Wide.

*35m Roll Approx*

# Finest Quality Feather Cushion Pads

Well filled cushion pads with 5 thread per cm overlocking for durability. Filled only with European feather with a no live plucking warranty. Covered with the best quality cambric, a 100 % natural material which reduces the ability of feathers to migrate, made with 200 thread count. Excellent quality using only small whole duck feathers.

Square Sizes: (each)

16" x 16" (40cm)

18" x 18" (46cm)

20" x 20" (51cm)

22" x 22" (56cm)

24" x 24" (61cm)

26" x 26" (66cm)

Oblong sizes: (Per Pair)

16" x 12"

18" x 14"

20" x 12"

24" x 12"

24" x 16"

Oblong cushions sold in pairs only.



## Hollow Fibre Cushion Pads

Our hollowfibre cushion pads are ideal for allergy sufferers, the fibre is soft and lightweight with a high loft, housed in a white polypropylene cover. All cushions comply with BS5852 Part 2 Source 2.

16" x 16" (40cm)

18" x 18" (46cm)

20" x 20" (51cm)

24" x 24" (61cm)

Other sizes available on request.



# Curtain Hooks



## **Standard Plastic Hook (White)**

Pack of 1000



## **Swish N800 Hook (White)**

Pack of 100

Pack of 1000

Pack of 5,000



## **Silent Gliss 3582 Wave Hook (White)**

Pack of 100

Pack of 1000

Pack of 20,000



## **Silent Gliss 6146 Hook (White)**

Nylon, Pack of 100



## **Silent Gliss 3571 Mini Hook (White)**

Nylon, Pack of 100



## **Metal Curtain Hook Zinc Plated**

Pack of 1000

Pack of 10,000



## **Brass Curtain Hook Brass Plated**

Pack of 1000

Pack of 10,000



## **Pin Hook**

Box of 1000

Box of 10,000



## **Pinch Pleat Hook Zinc Plated**

Box of 200

# Workroom Essentials



## Coats "Tre Cerchi" Cotton Sewing Thread

Black / Sand / Unbleached / Ivory / White

Box of 10 (500m rolls)



## Coats "Moon" Polyester Sewing Thread

Beige / Ivory / Natural / White / Black

Reels of 5000yd



## Easy Cover Buttons Nickel Plated Brass

19mm

22mm

28mm



## Zip on Rolls

White or Beige

Roll of 200m



## Zip Sliders

White or Beige

Box of 100



## Piping Cord

5mm Unbleached (00) 130m Roll



## Fiskars Scissors

21cm All Purpose Scissors

27cm All Purpose Scissors

# Curtain Weights & Eyelets



## **25mm lead weights**

Weight 13g each, 25mm Diameter

Box of 200

Box of 1000



## **32mm lead weights**

Weight 21g each, 32mm Diameter

Box of 200

Box of 1000



## **Covered Lead Weight**

Weight 12.5g each, 44mmx 30mm

Box of 100

Box of 1000



## **25g Lead Weight Tape**

25gs per metre (100m Roll)



## **50g Lead Weight Tape**

50gs per metre (50m Roll)



## **70g Lead Weight Tape**

70gs per metre (25m Roll)



## **100g Lead Weight Tape**

100gs per metre (25m Roll)



## **Eyelets 40mm Steel Eyelets**

Satin Nickel or Antique Brass Finish

Box of 100

# Hook & Loop Fastener

All Fastener is supplied in a 25m roll.

## **White:**

20mm Hook Sew On.

20mm Loop Sew On.

20mm Hook Self Adhesive.

20mm Loop Self Adhesive.

50mm Loop Sew On.

50mm Hook Self Adhesive.



## **Black:**

20mm Loop Sew On.

20mm Hook Self Adhesive.



## **Beige:**

20mm Loop Sew On.

20mm Hook Self Adhesive.



# Pelmet Brackets & Top Boards



## White Centre Brackets:

3" (77mm)

Pack of 20

6" (152mm)

Pack of 20



## Zinc Centre Brackets:

3" (77mm)

Pack of 20

6" (152mm)

Pack of 20



## White Slotted Angle Brackets:

4" x 3" (102mm x 76mm)

Pack of 20

5" x 4" (127mm x 102mm)

Pack of 20

6" x 5" (152mm x 127mm)

Pack of 20



## Zinc Slotted Angle Brackets:

4" x 3" (102mm x 76mm)

Pack of 20

5" x 4" (127mm x 102mm)

Pack of 20

6" x 5" (152mm x 127mm)

Pack of 20



## Wooden Top board for Pelmet:

Supplied cut to your required length

Up to 150cm    150cm - 300cm

96mm x 21mm

120mm x 21mm

146mm x 21mm

Price on Application

## Wooden Batons

21mm x 21mm 240cm

45mm x 21mm 240cm

Price on Application

# Lightweight Suspension & Draw Rods



**Curtain Wire:** 30m Roll



**Screw Eyes:** Box 200  
23mm length



**Screw Hooks:** Box 200  
23mm length



**Brass Plated Screw Eye:** Box 100  
37mm length

## Universal White Extendable Tension Rod:



40-60cm	Price each
60-90cm	Price each
90-150cm	Price each
120cm-210cm	Price each
190cm-250cm	Price each

## White Draw Rod:



Plastic Coated Metal

50cm	Price each
75cm	Price each
100cm	Price each
150cm	Price each



**Stainless Steel Effect Draw Rod:**  
75cm Price each

## Transparent Draw rods



75cm	Price each
100cm	Price each
125cm	Price each

# Tiebacks



Fuchsia



Cornflower



Red/ Claret



Brown



Gold



Silver / Ivory



Black / Charcoal



Aubergine / Lilac



Duck Egg



Cream / Ivory



Lilac / Amethyst



Chartreuse



Aubergine / Lilac

## Marrakesh

Tassel length = 265mm  
Embrace length = 885mm  
each



Cream



Taupe



Gold



Silver



Putty



Black



Cerise



Teal



Wine



Purple



Duck Egg



Chartreuse



Teal

## Virage Rope

Embrace length = 790mm  
Thickness = 25mm  
each

# Tiebacks



## Java Rope

Embrace length = 790mm.

Thickness = 25mm

Natural

each

Jute

each



# Holdbacks

## Contemporary Holdback



Stainless Effect, Chrome, Black Nickel,  
Antique Brass

92mm wide x 90mm projection

pair

## Swing Arm Holdback



Stainless Effect, Antique Brass

140mm wide 225mm length

pair



# Tiebacks Hooks



Small  
28mm x 24mm

Medium  
40mm x 32mm

Large  
46mm x 34mm

Brass	✓	✓	✓
Antique Brass	✓	✓	✓
Cream		✓	
White		✓	
Chrome	✓	✓	✓
Matt Nickel	✓	✓	✓
Clay		✓	
Black		✓	

Price: (pair)

Price: (box 50)



Colours displayed in Medium

# Accessories



**Round Track Spacer:** (Pack of 100)



**Silent Gliss Track Rectangular Spacer 3151:**

(Pack of 100)



**Silicone Spray:**

16oz Can (each)

16oz Can (case of 12)



**LayFlat Tubing 250 Gauge:**

2" Wide 330m Roll

3" Wide 330m Roll

4" Wide 330m Roll

20" Wide 330m Roll

36" Wide 240m Roll

Price on Application



**E-Tape Clear High-Performance Tape:**

48mm Wide, 150m Roll



**Xtraweave Crossweave Industrial Tape:**

50mm Wide, 50m Roll

# Silent Gliss Samples



## Silent Gliss Metropole Box:

Portable Box - 285mm x 315mm x 90mm



## Silent Gliss Metropole Display Block:

Freestanding Display



## Silent Gliss Metropole Colour Sticks:

Handheld

30mm - MCS30



## Silent Gliss Freestanding Tracks Board:

Freestanding - 520mm x 320mm x 140mm



## Autoglide Board:

Wall Mounted 595mm x 595mm



## Wall Track Board:

Wall Mounted 595mm x 595mm



# **CURTAIN RAIL**

## **SUPPLIES LTD**

On behalf of everyone at Curtain Rail Supplies Ltd, we would like to thank all of our longstanding and loyal customers for your support throughout the last 35 years.

A special mention to those who have offered us beautiful images for use in this pricelist.

Front Cover Image  
JAM Interiors Ltd

Rougemont Interior Images  
JAM Interiors Ltd

Cushions Image  
Bryant Furnishings Ltd

## **Curtain Rail Supplies Ltd**

Units 1 – 3 Tekoa Buildings  
Alphinbrook Road Marsh  
Barton  
Exeter  
EX2 8QF

(W) [www.curtainrailsupplies.com](http://www.curtainrailsupplies.com)  
(E) [sales@curtainrailsupplies.com](mailto:sales@curtainrailsupplies.com)  
(T) 0330 818 8000  
(U) 01392 420964